

500 SERIES

STANDARD & OPTIONAL EQUIPMENT



HELICOPTERS™

Marketing and Sales
4555 E. McDowell Road
Mesa, Arizona 85215-9734

Comments and/or questions may be directed to:

Sales: (480) 346-6344

Fax: (480) 346-6339

E-mail: sales@mdhelicopters.com

Revised February 2009

© 2009 MD Helicopters, Inc. All rights reserved.

This document is not subject to a revision service. It is the manufacturer's practice to continuously improve its products and therefore the right is reserved to make changes without notice in the design or manufacture of the MD 500 Series helicopter which may be considered necessary.



500 SERIES

TABLE OF CONTENTS

Item	Page	Item	Page
Standard Equipment.....	1-7	Onboard Weighing System.....	14
Standard Cockpit Interior.....	7	Emergency Floats.....	15
Standard Cabin Interior.....	7	Four-Bladed Tail Rotor.....	15
Wire Strike Protection Kit	7	High Visibility Main Rotor Blades.....	15
Instrument Panel	8	Optional Equipment.....	16-20
Instrument Console Slant Panel.....	8		
Dual Flight Controls.....	8		
Right-Hand Comand	8		
Engine/Fuel/Electrical/Hydraulic.....	9		
33.5 Gallon Auxiliary Fuel System.....	9		
21 Gallon Auxiliary Fuel System.....	9		
Airframe Fuel Filter.....	9		
250-C20R+ Engine.....	9		
Interior Equipment.....	10		
Leather Seats, Panels & Trim	10		
Air Conditioner R-134 with fwd evaporator	10		
Comfort Windows	10		
Flat Panel Monitor Mounts.....	11		
External Equipment	11		
Carbide Skid Shoes.....	11		
Dual Side Mount – FLIR/NIGHTSUN.....	11		
Heated Pitot Tube.....	11		
SX-5 Searchlight	12		
SX-16 Searchlight.....	12		
Nightscanner Movable Landing/Searchlight	12		
AFS Inlet Barrier Filtration System.....	12		
Airborne Video Turrets, Side Mounts	13		
Breeze Eastern Cargo Hook	14		
TALON Cargo Hook.....	14		



500E STANDARD EQUIPMENT AND FEATURES

*Airframe Options Included as of 2008

Airframe

- **Extended landing gear***
- **Rapid door removal hinges (cockpit and cabin)***
- Tinted canopy panels
- Tinted door/window panel-left front
- Tinted door/window panel-left rear
- Tinted door/window panel-right front
- Tinted door/window panel-right rear
- Rain gutter set
- Keyed locks (4)
- Fuselage hard points
- Jacking fittings
- Passenger steps
- Anti-collision lights (2)
- Landing light, nose mounted
- Position lights

Interior

- **LH rotor brake***
- **Heater defogger system***
- Crew seats with 4-point harness restraint
- Passenger seats with 3-point harness restraint
- Vinyl and fabric cushions
- Vinyl interior trim panels
- Crew and cabin compartment floor carpet
- Map case
- Fire extinguisher
- First aid kit
- Cabin lighter/28-volt utility outlet
- Battery-heavy duty Marathon 17-ampere-hour
- Fresh air ventilation system
- Cockpit utility light
- Cabin convenience light
- Instrument lighting
- Cabin soundproofing
- Cargo tie-down fittings

Engine and Electrical

- Rolls-Royce 250-C20B engine, 420 shp (313 kw)
- Automatic engine reignition
- Engine wash kit, MD 500 series
- 64 gallon (242 l) fuel system
- 85 amp starter generator
- External power receptacle
- **Generator cooling kit***

Rotor and Control

- **Dual LH command flight controls***

Flight and Engine Instruments

- **AFS engine inlet barrier filter***
- **Collective hobbs meter***
- **Facet oil filter***
- Dual tachometer, NR and N2
- Engine oil pressure indicator
- Engine torque meter
- N1 tachometer
- Fuel quantity indicator
- Digital chronometer
- Airspeed indicator
- Barometric altimeter
- DC ammeter
- Outside air temperature indicator
- Magnetic compass
- Turbine outlet temp indicator
- Engine oil temp indicator

500E STANDARD EQUIPMENT AND FEATURES

Avionics *New for 2008*

- GNS-430W NAV/COM/GPS
- GTX-328 Mode A,C,S Transponder
- SL-40 VHF COM
- GAE-43 Altitude Encoder
- GMA-347 Audio Panel
- GI-106A CDI
- IVSI
- Attitude Indicator
- GCF-328 Cooling Fan
- Artex C406-2HM ELT
- Avionics Master Switch
- Co-Pilots ICS Footswitch

Miscellaneous

- Engine and airframe log books
- Engine maintenance manual
- Battery logbook
- Flight manual
- Handbook of maintenance instructions
- Illustrated parts catalog
- Engine exhaust cover
- Engine inlet cover
- Pitot tube cover
- Main rotor blade tie-downs
- Ground handling wheels

Annunciator Panel

- Battery overtemp warning light
- Engine chip detector warning light
- Engine out warning light
- Fuel filter obstruction warning light
- Fuel low warning light
- Generator out warning light
- Low rotor rpm warning light
- Main transmission chip detector warning light
- Main transmission oil pressure warning light
- Main transmission oil temp warning light
- Tail rotor transmission chip detector warning light





530F STANDARD EQUIPMENT AND FEATURES

*Airframe Options Included as of 2008

Airframe

- **Extended landing gear***
- **Rapid door removal hinges (cockpit and cabin)***
- Tinted canopy panels
- Tinted door/window panel-left front
- Tinted door/window panel-left rear
- Tinted door/window panel-right front
- Tinted door/window panel-right rear
- Rain gutter set
- Keyed locks (4)
- Fuselage hard points
- Jacking fittings
- Passenger steps
- Anti-collision lights (2)
- Landing light, nose mounted
- Position lights

Interior

- **LH rotor brake***
- **Heater defogger system***
- Crew seats with 4-point harness restraint
- Passenger seats with 3-point harness restraint
- Vinyl and fabric cushions
- Vinyl interior trim panels
- Crew and cabin compartment floor carpet
- Map case
- Fire extinguisher
- First aid kit
- Cabin lighter/28-volt utility outlet
- Battery-heavy duty Marathon 17-ampere-hr
- Fresh air ventilation system
- Cockpit utility light
- Instrument lighting
- Cabin soundproofing
- Cargo tie-down fittings
- Cabin convenience light

Engine and Electrical

- Rolls-Royce 250-C30 engine, 650 shp (485 kw)
- Automatic engine reignition
- Engine wash kit, MD 500 series
- 64 gallon (242 L) fuel system 85 amp starter generator
- 200 amp starter generator
- External power receptacle
- Generator cooling kit

Rotor and Controls

- **Dual LH Command Flight Controls***

Flight and Engine Instruments

- **AFS Engine Inlet Barrier Filter***
- **Collective hobbs meter***
- Facet oil filter*
- Dual tachometer, NR and N2
- Engine oil pressure indicator
- Engine torque meter
- Engine oil temp indicator
- N1 tachometer
- Fuel quantity indicator
- Digital chronometer
- Airspeed indicator
- Barometric altimeter
- DC ammeter
- Outside air temperature indicator
- Magnetic compass
- Turbine outlet temp indicator

530F

530F STANDARD EQUIPMENT AND FEATURES

Avionics *New as of 2008*

- GNS-430W NAV/COM/GPS
- GTX-328 Mode A, C, S Transponder
- SL-40 VHF COM
- GAE-43 Altitude Encoder
- GMA-347 Audio Panel
- GI-106A CDI
- IVSI
- Attitude Indicator
- GCP-328 Cooling Fan
- Artex C406-2HM ELT
- Avionics Master Switch
- Co-Pilots ICS Footswitch

Miscellaneous

- Ground handling wheels
- Engine and airframe log books
- Engine maintenance manual
- Battery logbook
- Flight manual
- Handbook of maintenance instructions
- Illustrated parts catalog
- Engine exhaust cover
- Engine inlet cover
- Pitot tube cover
- Main rotor blade tie-downs

Annunciator Panel

- Battery overtemp warning light
- Engine chip detector warning light
- Engine out warning light
- Fuel filter obstruction warning light
- Fuel low warning light
- Generator out warning light
- Low rotor rpm warning light
- Main transmission chip detector warning light
- Main transmission oil pressure warning light
- Main transmission oil temp warning light
- Tail rotor transmission chip detector warning light





520N STANDARD EQUIPMENT AND FEATURES

*Airframe Options Included as of 2008

Airframe

- **Extended landing gear***
- **Rapid door removal hinges (cockpit and cabin)***
- Tinted canopy panels
- Tinted door/window panel-left front
- Tinted door/window panel-left rear
- Tinted door/window panel-right front
- Tinted door/window panel-right rear
- Rain gutter set
- Keyed locks (4)
- Fuselage hard points
- Jacking fittings
- Passenger steps
- Anti-collision lights (3)
- Landing light, nose mounted
- Position lights

Interior

- **LH rotor brake***
- **Heater defogger system***
- Crew seats with 4-point harness restraint
- Passenger seats with 3-point harness restraint
- Vinyl and fabric cushions
- Vinyl interior trim panels
- Crew and cabin compartment floor carpet
- Map case
- Fire extinguisher
- First aid kit
- Cabin 28-volt utility outlet
- Battery-heavy duty Marathon 17-ampere-hour
- Fresh air ventilation system
- Cockpit utility light
- Cabin convenience light
- Instrument lighting
- Cabin soundproofing
- Cargo tie-down fittings

Engine and Electrical

- Rolls-Royce 250-C20R engine, 450 shp (336 kw)
- Automatic engine reignition
- Engine wash kit, MD 500 series
- 64 gallon (242 L) fuel system
- 85 amp starter generator
- External power receptacle
- Facet oil filter
- **Generator cooling kit***

Rotor and Controls

- **Dual LH command flight controls***

Flight and Engine Instruments

- **Engine particle separator filter***
- **Collective hobbs meter***
- Dual tachometer, NR and N2
- Engine oil pressure indicator
- Engine torque meter
- N1 tachometer
- Fuel quantity indicator
- Digital chronometer
- Airspeed indicator
- Barometric altimeter
- DC ammeter
- Outside air temperature indicator
- Magnetic compass
- Digital/analog turbine outlet temp indicator
- Engine oil temp indicator

520N

520N STANDARD EQUIPMENT AND FEATURES

Avionics New as of 2008

- GNS-430W NAV/COM/GPS
- GTX-328 Mode A,C,S Transponder
- SL-40 VHF COM
- GAE-43 Altitude Encoder
- GMA-347 Audio Panel
- GI-106A CDI
- IVSI
- Attitude Indicator
- GCF-328 Cooling Fan
- Artex C406-2HM ELT
- Avionics Master Switch
- Co-Pilots ICS Footswitch

Miscellaneous

- Ground handling wheels
- Engine and airframe log books
- Engine maintenance manual
- Battery manual
- Flight manual
- Handbook of maintenance instructions
- Illustrated parts catalog
- Engine exhaust cover
- Engine inlet cover
- Pitot tube cover
- Main rotor blade tie-downs

Annunciator Panel

- Battery overtemp warning light
- Engine chip detector warning light
- Engine out warning light
- Fuel filter obstruction warning light
- Fuel low warning light
- Generator out warning light
- Low rotor rpm warning light
- Main transmission chip detector warning light
- Main transmission oil pressure warning light
- Main transmission oil temp warning light
- Tail rotor transmission chip detector warning light



500 SERIES

STANDARD EQUIPMENT

- STANDARD COCKPIT INTERIOR



- STANDARD CABIN INTERIOR



- WIRE STRIKE PROTECTION KIT

Installed weight = 15.4 lb. (7.0 kg)

Designed to provide an increased measure of protection for the helicopter's frontal area in the event of inadvertent flight into horizontally strung wires. Includes a windshield deflector, and an upper and lower cutter/deflector. Each cutter has a high tensile steel cutting blade that can be easily replaced.



500 SERIES

OPTIONAL EQUIPMENT



▪ INSTRUMENT CONSOLE SLANT PANEL

Installed weight = 3.0 lb. (1.4 kg)

Provides additional room for communication and navigation in the console between the pilot and co-pilot. Location allows moving communications equipment closer to pilot for ease of operation and tilts displays for improved readability.



▪ DUAL FLIGHT CONTROLS

Installed weight = 10.4 lb. (4.7 kg)

Duplicates controls for copilot. Easily removed, even in the field, without tools. Allows aircraft to be used for training, dual-pilot VFR, or as a revenue generating passenger seat at the owner's discretion. Left-hand command is standard.



▪ RIGHT-HAND COMMAND

Installed weight = -0.0 lb. (0.0 kg)

For customers requiring right-hand command, controls and instrument panel are changed to right side. Available for single or dual controls on the MD 500E and the MD 530F only. Left hand command is standard.

500 SERIES

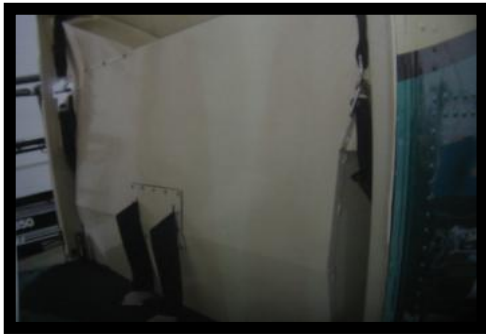
OPTIONAL EQUIPMENT

▪ 33.5 GALLON AUXILIARY FUEL SYSTEM

Robertson Aviation, Inc.

Installed weight = 50.0 lb. (21.2 kg).

Provides extra flight time at speed for maximum endurance. Fully qualified crash-resistant design to FAA Part 27. Fits under rear seat. Includes fuel quantity gauge on tank. Compatible with business seat option.



▪ 21 GALLON AUXILIARY FUEL SYSTEM

-Fargo, Inc.

Installed weight = 44.5 lb. (20.2 kg).

Gravity feed to main tank. Fits behind rear seats.

▪ AIRFRAME FUEL FILTER

Installed weight = 6.7 lb. (2.9 kg)

Designed to strip fuel of ice particles prior to entering the engine fuel system. Filter incorporates a filter unit mounted in series between the aircraft fuel system and engine fuel system. Automatic illumination cockpit caution warning. When the filter becomes fully clogged, a bypass valve contained in the filter unit opens and fuel bypasses the filter element. Ice additives required for fuel temperatures below -12 °C.



▪ 250-C20R+ ENGINE

Rolls-Royce

Installed weight difference = 15.0 lb. (6.8 kg).

Provides engine rating to 450 shp. Available as option for MD 500E series.

500 SERIES

OPTIONAL EQUIPMENT



▪ LEATHER SEATS, PANELS & TRIM

Installed weight = 19.7 lb. est. (8.9 kg) est.

Includes high grade leather upholstery, panel and trim for cockpit and cabin areas. Available in many colors with matching floor carpeting.



▪ AIR CONDITIONER R-134 W/ FORWARD EVAPORATOR

Integrated Flight Systems, Inc.
Installed weight 83.9 lb. (38.5 kg)

Compressor utilizes belt-drive from transmission with large condenser mounted above the cabin area. Evaporators are provided in the cockpit and cabin areas. Four outlets are used in the cockpit area and vents are provided in the cabin area. Separate fan controls are provided for cockpit and cabin.



▪ COMFORT WINDOWS

Tech Tools, Inc.

Installed weight = 12.0 lb. (5.4 kg)

Two (2) in each cabin & two (2) in each cockpit with pop out vents. Bulged side windows increases elbow- room by up to 4 inches (10 cm).

500 SERIES

OPTIONAL EQUIPMENT

▪ FLAT PANEL MONITOR MOUNTS

Installed weight = 5.2 lb. (3.3 kg)

Lightweight mounting platforms for cockpit and cabin areas. Offer adjustments for tilting and rotating panels. Simple thumb-screw and knobs allow easy installation and removal.



▪ CARBIDE SKID SHOES

Carbide Technology, Inc.

Carbide Skid Shoes are lightweight, corrosion resistant and have a low profile wear surface. They have a smooth finish and offer superior wear resistance. They are bound to the bottom of new or existing helicopter skid shoes, through a patented process, which can repair shoes or extend their life – saving customer's money

▪ DUAL SIDE MOUNT – FLIR/NIGHTSUN

Meeker Aviation, Inc.

Installed weight = 16.0 lb. (7.6 kg)

Dual mounts are the only available system, which enables the operator to safely install both Nightsun and FLIR on one side of the aircraft. Tactically the optimum configuration load rating to 90 lbs.



▪ HEATED PITOT TUBE

NO CHARGE

Installed weight = 1.0 lb. (0.5 kg)

Heated pitot tubes reduce the possibility of inadvertent ice or freezing rain from clogging up the airspeed system, which provides airspeed and altitude information

500 SERIES

OPTIONAL EQUIPMENT



▪ SX-5 SEARCHLIGHT

Installed weight = 14.8 lb. (6.7 kg)

Side-mounted, this small, but powerful, searchlight has a typical range of 1,650 feet (500 m.), and has a beam intensity of 15 million candlepower Nightsun. A “joy stick” in the cockpit allows the crew two axis of movement. There is no recycle time required between start-ups.

▪ SX-16 SEARCHLIGHT

Installed weight = 65.0 lb. (29.5 kg)

Side mounted with gold reflector, this higher output lamp has 30 million candlepower Nightsun. A remote control focus allows the crew to vary the beam width from 4-20°, with a typical useful range for target identification of one mile. An optional inflight changeover infrared filter for covert surveillance is available.



▪ NIGHTSCANNER® MOVEABLE LANDING/SEARCHLIGHT

Installed weight = 23.1lb. (10.4 kg)

Belly mounted; provides 400K candlepower illumination for hover/taxi over ramps, rough terrain or near unlit obstacles. Also serves as low power movable searchlight and has an infrared option for NVG operations. The system is controlled with collective mounted switches for easy operation during flight. Can be rotated 360° and stows automatically. **Super Night Scanner 800K candlepower also available.**

▪ AFS INLET BARRIER FILTRATION SYSTEM

Aerospace Filtration Systems

Installed weight = 23.1lb. (10.4 kg)

The dual-entry AFS MD 500 IBF system provides optimum hover and forward flight inlet performance for the engine.



500 SERIES

OPTIONAL EQUIPMENT



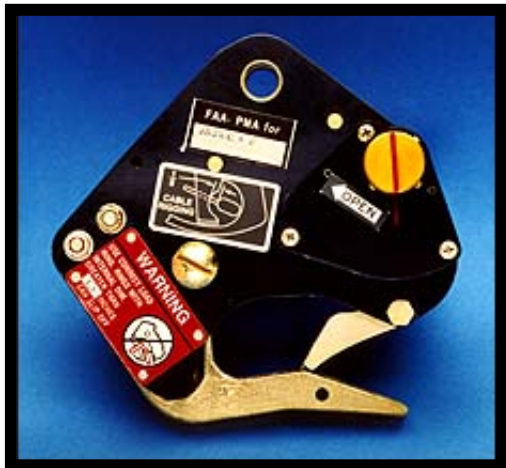
▪ AIRBORNE VIDEO TURRETS, SIDE MOUNTS

Installed weight = 8.0lb. (3.8 kg)

Side mount uses jack-point fitting for primary support with vertical brace to eliminate fore-aft movement. Supports turret weight to 100 lbs (45.3 kg). Accepts adapters for wide range of turret applications.

500 SERIES

OPTIONAL EQUIPMENT



▪ CARGO HOOK: 2,000 LB. CAPACITY

Breeze Eastern

Installed weight = 7.0 lb. (3.2 kg)

Rated at 3,000 lb. (1,361 kg), permits the operator to carry a jettisonable external load of up to 2,143 lb. (1,000kg) (current operational limit). Hard mounted to fuselage center keel, cargo hook can be removed when not in use. Current speed is limited to 100 knots with load on hook. Electrical release control mounted on pilot's cyclic stick with mechanical back-up release. Mounts directly under center of gravity. Optional digital readout onboard weighing system available.

▪ TALON CARGO HOOK KIT

Onboard Systems International

Installed weight = 6.1 lb. (2.8 kg)

The TALON LC Cargo Hook Kit is a reliable, low maintenance system. TALON Hooks are designed with high margins of safety that enable the pilot to release loads up to 2.5 times rated load in emergency situations. They are easily and quickly overhauled by the customer or factory and are field serviceable with simple hand tools.



▪ ONBOARD WEIGHING SYSTEM

Onboard Systems International

Installed weight = 1.5 lb. (0.7 kg)

A quick glance at the cockpit mounted indicator tells the pilot, within 10 lbs or kgs, the weight of the cargo on the hook.

500 SERIES

OPTIONAL EQUIPMENT

- **EMERGENCY FLOATS**

Apical Industries, Inc.

Installed weight = 115.0 lb. (52.2 kg)



- **FOUR-BLADED TAIL ROTOR**

Installed weight = 9.2 lb. (4.08 kg)



- **HIGH VISIBILITY MAIN ROTOR BLADES**

Installed weight = .4 lb. (0.2 kg)

Optional for customers requiring high visibility during operations.





500 SERIES

OPTIONAL EQUIPMENT

Airspeed/Time	lb	kg
DAVTRON 877 DIGITAL CLOCK	0.2	0.1
HEATED PITOT TUBE, MD 500E/530F	0.4	0.2
HEATED PITOT TUBE, MD 520N	1.0	0.5

Altitude	lb	kg
BLIND ENCODER GARMIN GAE-43	2.0	0.9
ENCODING ALTIMETER 3 INCH	3.7	1.7
INSTANTANEOUS VERTICAL SPEED INDICATOR	2.5	1.1
KRA10-00 RADAR ALT W/KI250 IND	4.4	2.0
KRA405B-15 RADAR ALT W/KNI416 IND	10.5	4.8
TRA 3000 RAD ALT WITH TRI 40 INDICATOR	2.6	1.2

Altitude/Heading	lb	kg
ATTITUDE GYRO INDICATOR 3 INCH	3.1	1.4
DIRECTIONAL GYRO-PANEL MOUNTED	3.0	1.4
KCS55A-01 COMPASS SYSTEM	10.3	4.7
KI229-00 RADIO MAGNETIC INDICATOR	2.0	0.9
TURN AND BANK INDICATOR, 2-INCH	1.4	0.6
TURN AND BANK INDICATOR, 3-INCH (MID CONTINENT 1394T100-7Z)	1.6	0.7
TURN AND BANK INDICATOR 3-INCH UNITED INSTRUMENTS	1.6	0.7

Avionics	lb	kg
GNS-430W NAV/COM/GPS	7.8	3.5
GNS-430AW NAV/COM/GPS	7.8	3.5
GNS-530W NAV/COM/GPS	9.8	4.4
GNS-530AW NAV/COM/GPS	9.8	4.4
GPS-400-GPS		
GPS-500-GPS		
GNC-420-COM/GPS		
GMA-340 AUDIO PANEL – STEREO		
GMA-347 AUDIO PANEL – STEREO, WITH PANEL IPOD INPUT		
GTX-330D TRANSPONDER-MODES A,C,S WITH TIS CAPABILITY AND DIVERSITY ISOLATION (TWO ANTENNA)	4.3	2.0
GTX-330 TRANSPONDER-MODES A,C,S W/O TIS AND DIVERSITY	4.3	2.0
GTX-327 TRANSPONDER- MODES A,C	4.3	2.0



500 SERIES

OPTIONAL EQUIPMENT

GMX-200 MULTI FUNCTION DISPLAY UNIT

GNC-250 XL – COMM/GPS

GDL-69 SATELLITE WX-W/O DISPLAY

GDL-69A SATELLITE WX WITH XM RADIO W/O DISPLAY

KLN90B

KT76A MODES A,C TRANSPONDER 4.2 1.9

KT76C MODES A,C TRANSPONDER 4.2 1.9

KT-70 MODES A,C,S TRANSPONDER 5.2 2.4

KDR510 SATELLITE WEATHER

DAVID/CLARK H10-56 HEADSET – 1 EACH 1.1 0.5

POINTER 3000 ELT

Comm/Intercom	lb	kg
A711 AUDIO PANEL		
AA97 AUDIO PANEL SYSTEM-Includes 2each AA-97 single user audio panel	5.0	2.2
AMS-42F DUAL CHANNEL AUDIO PANEL	2.8	1.3
AMS-44 DUAL CHANNEL AUDIO PANEL	2.8	1.3
CD PLAYER AM/FM RADIO STEREO PS ENG PXE7300	5.7	2.6
CYCLIC REMOTE FREQUENCY SWITCH	0.3	0.1
GARMIN GNA-340 AUDIO PANEL	3.3	1.5
HAND HELD COMM RADIO PROVISIONS TO INCLUDE AA-34 UNIVERSAL		
HEADSET BOSE SERIES X NOISE CANCELING STEREO	1.1	0.5
HEADSET DAVID CLARK H10-56	1.1	0.5
HEADSET DAVID CLARK NOISE CANCELING H10-56HXP	1.5	0.7
KMA24H-71 AUDIO PANEL	2.3	1.0
KMA24H-71 DUAL AUDIO CONTROL/INTERCOM	6.2	2.8
KTR908 COM		
KX165-25 10 WATT COM/NAV TRANCEIVER WITH KI-206 NAV INDICATOR		
KY196A-30 16 WATT VHF COMM TRANCEIVER	5.2	2.4
KY-96A-61 10 WATT VHF COMM TRANCEIVER	5.5	2.5
NAT 806 UHF 800MHZ BAND TRANSCEIVER	6.0	2.7
NAT AA22-163, 220 WATT PA AND SIREN	21.4	9.7
NAT AA34-200 UNIVERSAL RADIO INTERFACE	0.2	0.1
NAT AA94 DUAL CHANNEL AUDIO CONTROLLER	2.3	1.0
NAT AA95 SINGLE CHANNEL AUDIO CONTROLLER	2.5	1.1
NAT AA95 SINGLE CHANNEL AUDIO DUAL CONTROLLERS	5.0	2.3
NPX-138N – FM TRANCEIVER 138-174 MHZ	3.1	1.4



500 SERIES

OPTIONAL EQUIPMENT

Comm/Intercom	lb	kg
PA SIREN SYSTEM, External with AA-22 controller and TS-100WR speaker, with recessed mount	21.4	9.7
PROVISIONS MOTOROLA SPECTRA 800 MHZ RADIO	2.5	1.1
REAR SEAT TRANSMIT CAPABILITY includes AA-12S rear seat audio panel and 2 each rear lapel cords. Note: Compatible with NAT audio panels		
SL-30-COM/NAV		
TDFM-6148 VHF HI/UHF LO/800 (136-174/403-512/800)	5.1	2.3
TDFM-688-P302 NV 2 R/T TRANCEIVER SYSTEM (MESA PD Specific)		
TDFM-7000 SERIES 4 R/T SYSTEM	5.1	2.3
TFM-138 VHF HIGH BAND (138-174)	3.1	1.4
TFM-403 FM UHF HIGH BAND (403-512)	4.5	2.0
TFM-500 VHF/UHF HIGH BANDS (138-174/403-512)	3.1	1.4
TFM-550 VHF LOW/VHF/UHF HIGH 30-50/138-174/403-512	3.1	1.4
WULFSBERG RT5000 TRANSCEIVER	27.2	12.3
WULFSBURG C5000 FLEX COMM CONTROL HEAD	4.2	1.9

Controls	lb	kg
MASON GRIP INSTALLED ON PILOT SIDE ONLY	1.0	0.5

Electrical System	lb	kg
KA-22 AVIONICS COOLING FAN	2.2	1.0
LEAD ACID BATTERY G641S-17 AMP HOUR	23.0	10.4
28 VOLT CABIN AND COCKPIT RECEPTICALS	1.6	0.7

Engine	lb	kg
DIAMOND J TOT INDICATOR 61000-34 (C20B ENGINE)		
DIAMOND J TOT INDICATOR 61000-35 (C20R ENGINE)		
ENGINE 250-C20R		
ENGINE EXHAUST OIL BREATHER HT-800		
P/C SAFETY VALVE KIT – for C20B ENGINE ONLY		

Environmental	lb	kg
AIR CONDITIONER R-134 WITH FORWARD EVAPORATOR	88.8	40.3



500 SERIES

OPTIONAL EQUIPMENT

Exterior Accessories	lb	kg
BREEZE EASTERN CARGO HOOK – REQUIRE FACTORY HARDPOINT	7.0	3.2
CARGO HOOK LOAD WEIGH SYSTEM – MODEL E51		
CARGO HOOK WITH HARD POINT		
DUAL SIDE MOUNT – FLIR/NIGHTSUN – MOUNT ONLY	20.0	9.1
EXTERIOR CREW HANDLES 4 EACH	5.0	2.3
FOUR BLADED TAIL ROTOR		
MEEKER ENGINE BAY QUICK RELEASE HINGES	2.1	7.0
SKID MIRROR	2.0	0.9
TYLER SPECIAL OPERATIONS PLATFORM		
WIRE STRIKE	15.4	7.0

Exterior Lights	lb	kg
PROVISIONS FOR SIDE MOUNTED SX16 NIGHTSUN	19.5	8.8
PULSE SYSTEM FOR EXISTING LANDING LIGHT		
PROVISIONS FOR SX-16 NIGHTSUN AND POP-200 THERMAL IMAGER MOUNTED ON MEEKR DUAL SIDE MOUNT		
SX-16 NIGHTSUN SIDE MOUNTED WITH GOLD REFLECTOR	65.0	29.5
SX-16 SIDE MOUNTED W/O GOLD REFLECTOR	65.0	29.5
SX-5 15 MILLION CANDLE POWER NIGHTSUN – SIDE MOUNTED		
NIGHT SCANNER – 400 CANDLE POWER – BELLY MOUNTED	23.0	10.4
SUPER NIGHT SCANNER – 800 CANDLE POWER – BELLY MOUNTED	23.0	10.4

Fuel System	lb	kg
AIRFRAME FUEL FILTER INSTALL – (500E/N – 503) (500F-505)	6.7	3.0
FARGO 21 GALLON AUX FUEL TANK		

Gear/Handling	lb	kg
CARBIDE SKID SHOES		

Infrared Cameras	lb	kg
FLIR 8500 IR CAMERA SYSTEM – BASIC NO OPTIONS – SIDE MOUNTED WITH AVALEX 10 INCH MONITOR (FOR DOMESTIC USE ONLY)		
FLIR EQUIPMENT – 8500		
PROVISIONS FOR FLIR 7000/8000 SERIES NOSE MOUNTED, includes turret mount and monitor mount and all cables and wiring. Note: Does not include		



500 SERIES

OPTIONAL EQUIPMENT

vibration isolation mount

PROVISIONS FOR FLIR 7000/8000 SERIES SIDE MOUNTED, includes turret and monitor mount and all cables and wiring. Note: Does not include vibration isolation mount

SLASS SYSTEM FOR USE WITH FLIR 7000/8000 SERIES AND WESCAM FLIR'S ONLY

Interior/Trim/Lights	lb	kg
INSTRUMENT PANEL FACE PLATE MODIFICATION		
LEATHER COVERED INTERIOR PANELS		
LEATHER COVERED SEATS		
MESH SEATS, BLACK 2+2	-27.0	-12.2
NVG COMPATIBLE LIGHTING EXTERNAL AND INTERNAL		
SLANT PANEL PEDISTAL		

Mapping Systems	lb	kg
AERO COMPUTERS LE-5000 MAPPING SYSTEMS		

Windows/Canopy	lb	kg
COMFORT WINDOW – 2 each Cabin, 2 each Cockpit – w/ SLIDES		
COMFORT WINDOW – 2 each Cabin, 2 each Cockpit – w/ POP OUT		
PARAVION LEFT FRONT DOOR OPENER		
PARAVION RIGHT FRONT DOOR OPENER		
COMFORT WINDOWS -2 each cockpit w/ SLIDES, 2 each cabin w/ POP-OUTS		
4 PLACE DOOR OPENER KIT – PARAVION	6.0	2.8